

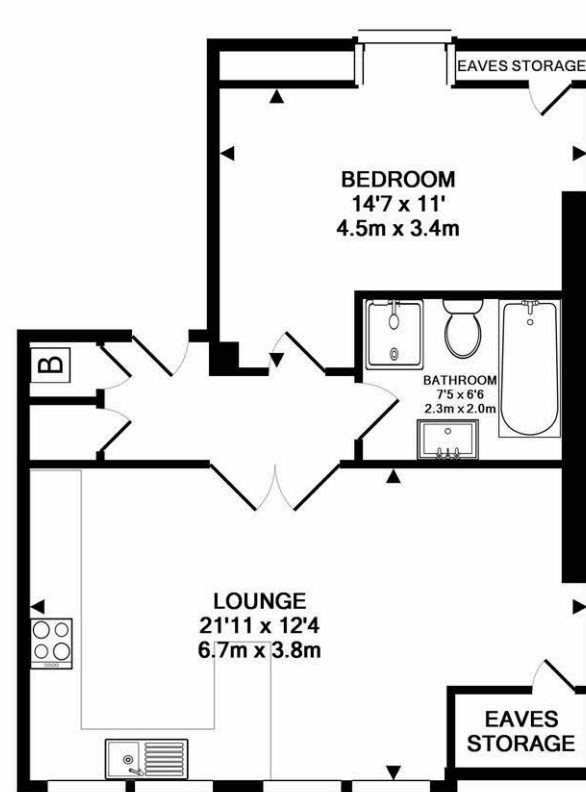


****AVAILABLE IMMEDIATELY**** ****ONE BEDROOM CONVERSION APARTMENT****
****FURNISHED**** A light and airy, stylish second floor apartment, forming part of a sensitive conversion on Tankerville Place, Jesmond. Ideally located in the heart of Brandling Village Conservation Area, Tankerville Place is perfectly placed close to Jesmond Metro Station, the shops, restaurants and cafés of Jesmond as well as Newcastle City Centre itself.



Available on a furnished basis, offering 520 Sq ft the accommodation briefly comprises private entrance hall with two built-in storage cupboards, a sunny south facing 21ft open plan lounge/kitchen with appliances; one double bedroom with dormer window; bathroom WC with four-piece suite. With a shared yard to the rear and on street permit parking available to the front, this great apartment would perfectly suit a professional occupant and simply demands an early internal inspection!

Available 10th November 2025 | £1,000pcm | 2nd Floor | Stylish Conversion Apartment | One Double Bedroom | 520 Sq ft (48.3m²) | 21ft Open Plan Lounge/Kitchen | Furnished | Bathroom WC | Communal Rear Yard | Brandling Village Conservation Area | On Street Permit Parking | GCH & DG | Council Tax Band: B | EPC Rating: D



TOTAL APPROX. FLOOR AREA 520 SQ.FT. (48.3 SQ.M.)

Whilst every attempt has been made to ensure the accuracy of the floor plan contained here, measurements of doors, windows, rooms and any other items are approximate and no responsibility is taken for any error, omission, or mis-statement. This plan is for illustrative purposes only and should be used as such by any prospective purchaser. The services, systems and appliances shown have not been tested and no guarantee as to their operability or efficiency can be given
 Made with Metropix ©2017

£1,000 PCM

IMPORTANT NOTE: These particulars and the descriptions and measurements herein do not constitute representation and whilst every effort has been made to ensure accuracy, this cannot be guaranteed.

